



M-King Tag

FEATURES

- M-King Tag is ATEX approved and thus can be used in potentially explosive atmosphere.
- The tag operates effectively with read range of over 8m when attached to metal.
- Rugged construction for high durability.
- Can be provided with Adhesive tape for easy attachment.

APPLICATIONS

- Due to high read range, M-King can be effectively used in asset tracking, Ware house management, Containers and Railway Coaches identification.
- Factory automation, Automotive & Security purpose.

Chip Type:	UHF Class 1 Gen 2, Alien Higgs 3	
	EPC 96 bit extendable up to 480 bits	
	User Memory 512 bit	
	Data retention of 50 years	
	Write endurance 100.000 cycles	
Mechanical:	Dimension	Dia. 62mm, thickness 10mm
	Material	ABS
	Colour	Blue
	Weight	25 gm.
Electrical:	Operating Frequency	865-868MHz, (902-928Mhz also available on request)
	Operating mode	Passive (battery-less transponder)
Ingress Protection:	IP67	
Thermal:	Storage Temp.	-20°C to +70°C
	Operating Temp.	-20°C to +70°C
Part Number:	309V3-Ex	
Atex Marking details:	II 1 G, Ex ia IIC T5 Ga	
Options:	Available with:	
	Other IC type on request	
	Other plastic material and colours	
	Adhesive backing for easy mounting (indoor application)	



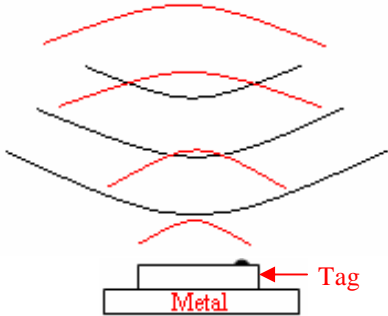
Tag Placement

- ✚ M-King is polarized parallel to rectangle in the tag.
- ✚ Place the tag in such a way that most of its bottom area comes in direct contact with metal.
- ✚ Ensure that there is no hindrance between the tag and the reader antenna.
- ✚ Reader antenna should be parallel to the axis of the rectangle in the tag as shown in below figure:

Correct way



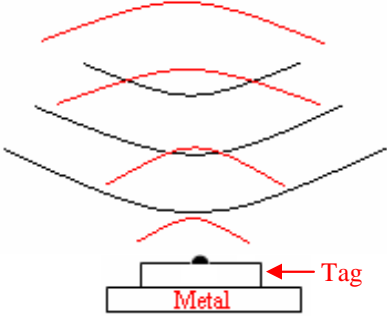
Antenna



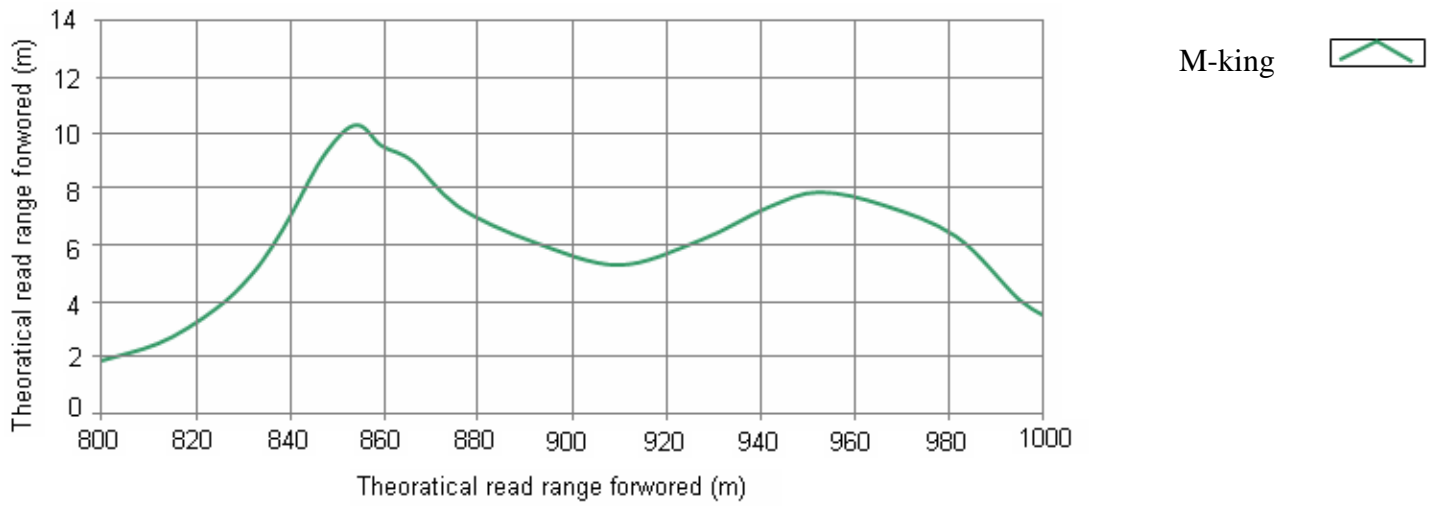
Wrong way



Antenna

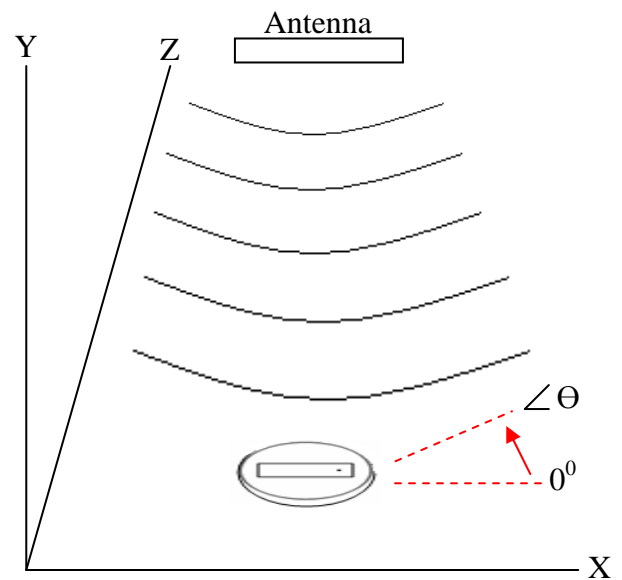
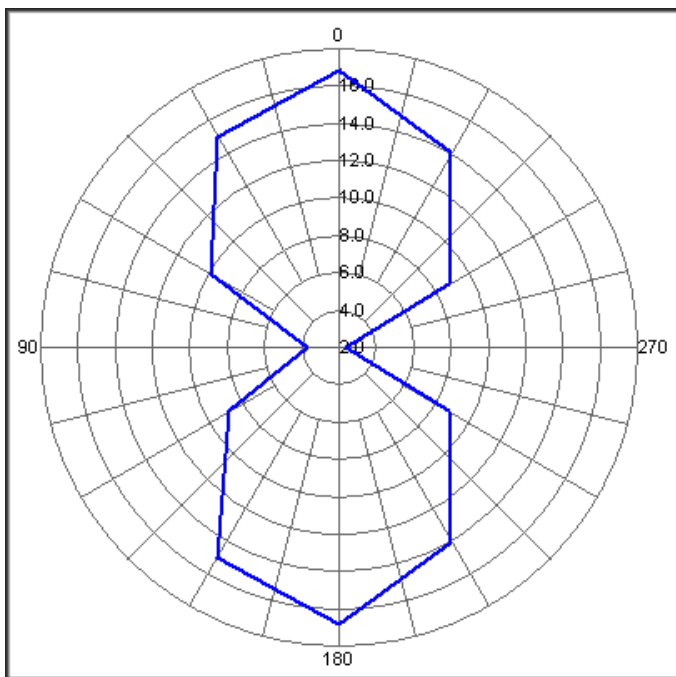


Frequency v/s Read Range Graph



Angular Sensitivity

M-King Tag Angular Sensitivity (Relative Read Range vs. Orientation)



Tag is rotated in X-Y plane about the z-axis