

2018

Product Range

Scanning & Display solutions

≡ OPTICON

4	ESL & FULL COLOR DISPLAYS	
	Accessories	
6	WINDOWS MOBILE COMPUTERS	
	Accessories	
8	ANDROID MOBILE COMPUTERS	
	Accessories	
10	HANDHELD COMPUTERS	
	Accessories	
12	COMPANION SCANNERS	
	Accessories	
14	WIRELESS SCANNERS	
	Accessories	
16	CABLED SCANNERS	
	Accessories	
18	STATIONARY SCANNERS	3
	Accessories	
20	SCAN ENGINES	
22	PRODUCT SELECTOR	



EE-150R

Display: e-paper b/w/r

Power 1x CR2450

Radio protocol: IEEE 802.15.4

Number of dots: 152 x 152

ART. CODE: 13946



EE-201

Display: e-paper b/w

Power: 2x CR2450

Radio protocol: IEEE 802.15.4

Number of dots: 200 x 96

ART. CODE 13163



EE-290

Display: e-paper b/w

Power: 2x CR2450

Radio protocol: IEEE 802.15.4

Number of dots: 296 x 128

ART. CODE 13841

4



ET-350

Display: TFT

Power: 5V

Interface: USB Ver 2.0

Number of dots: 320 x 240

ART. CODE 13698



ET-1002

Display: TFT

Power: 5V

Interface: USB Ver 2.0

Number of dots: 1280 x 800

ART. CODE 14148



EE-420R

Display: e-paper b/w/r

Power 2x AAA

Radio protocol: IEEE 802.15.4

Number of dots: 400 x 300

ART. CODE: 14053



EE-750R

Display: e-paper b/w/r

Power: 4x AAA

Radio protocol: IEEE 802.15.4

Number of dots: 640 x 384

ART. CODE 14054

SOLD SEPARATELY



EBS-40 BASE STATION

Power supply 6V/ 2A sold separately [\[10991\]](#)

Ethernet cable sold separately [\[12607\]](#)

ART. CODE 13665

SOLD SEPARATELY FOR EE-150, EE-201 AND EE-290



BRACKET, WALL MOUNT

ART. CODE 13758



BRACKET, WALL MOUNT

ART. CODE 13759

Adhesive

ART. CODE 13849

SOLD SEPARATELY FOR EE-750



BRACKET, WALL MOUNT

ART. CODE 14094



BRACKET

ART. CODE 14086



6

H-21

H-21 1D

- Barcode laser scanner
- Operating system: Windows Mobile™ 6.5
- Color camera
- Keypad: Numeric or Qwerty
- IP rate: 64
- GPRS/EDGE/3G/3.5G
- W-LAN, (IEEE 802.11 b/g)
- Bluetooth
- AGPS
- (NUMERIC) ART. CODE 12596**

H-21 2D

- 2D CMOS imager with auto-focus
- (NUMERIC) ART. CODE 12597**
- (QWERTY) ART. CODE 12599**

H-22

H-22 1D

- Barcode laser scanner
- Operating system: Windows Mobile™ 6.5.3
- Color camera
- Keypad: Numeric or Qwerty
- IP rate: 65
- GPRS/EDGE/3G/3.5G
- W-LAN, (IEEE 802.11 b/g/n)
- Bluetooth
- AGPS
- (QWERTY) ART. CODE 12754**
- (QWERTY, RFID) ART. CODE 12758**

H-22 2D

- 2D CMOS imager with auto-focus
- (QWERTY) ART. CODE 12755**
- (NUMERIC, RFID) ART. CODE 12757**
- (QWERTY, RFID) ART. CODE 12759**

H-32

H-32 1D

- Barcode laser scanner
- Operating system: Windows Embedded Compact 7
- Keypad: Numeric
- IP rate: 54
- W-LAN, (IEEE 802.11 a/b/g/n/)
- Bluetooth
- ART. CODE 13218**

DEFAULT ENCLOSED



H-21

- USB AC Adapter
- Standard battery H-21 [\[12560\]](#)
- Getting started disc
- Ear microphone
- Leather case
- Wrist strap
- Screen protector
- Mini USB cable
- Stylus + Cord



H-22

- USB AC Adapter
- Ear microphone
- Wrist strap
- Micro USB cable
- Stylus + Cord



H-32

- USB cable
- Wrist strap
- Quick start guide
- Stylus + cord [\[13289 + 13304\]](#)

SOLD SEPARATELY



CRD-22

- Power supply 5V enclosed
- USB cable enclosed
- Spare battery charging bay integrated
- [ART. CODE 12923](#)



H-22 HOLSTER

- [ART. CODE 13104](#)



CMK-22 CAR KIT

- [ART. CODE 13062](#)



H-22 PISTOL GRIP

- [ART. CODE 12936](#)



CRD-21

- Power supply 5V sold separately [\[10991\]](#)
- USB cable enclosed
- Spare battery charging bay integrated
- [ART. CODE 12558](#)



H-21/H-22

- Rechargeable battery
- [ART. CODE 12560](#)

SOLD SEPARATELY FOR H-32



RECHARGEABLE BATTERY

- [ART. CODE 13224](#)



CRD-32*

- Power supply 6V/2A sold separately [\[10991\]](#)
- Micro USB cable 1m sold separately [\[13610\]](#)
- Ethernet cable 1m sold separately [\[12607\]](#)
- [ART. CODE 13399](#)



HOLSTER

- [ART. CODE 13225](#)

H-32 SLEEVE

- Silicon sleeve for the H-32
- [ART. CODE 14070](#)

* Terminal charging features and spare battery charging bay integrated



8

H-27

H-27 1D

Barcode laser scanner

Operating system: Android 4.2.2

5.0 MP camera with Auto Focus and Flash LED

IP rate: 65

HSPA+ with Data and Voice

WiFi, 802.11 a/b/g/n

Bluetooth 4.0

NFC

GPS and GLONASS

ART. CODE 13280

H-27 2D

2D CMOS imager

ART. CODE 13281

DEFAULT ENCLOSED



H-27

Battery [\[13343\]](#)

Power adapter

USB to DC cable

Micro USB cable

Ear phone

Quick start guide

SOLD SEPARATELY



**H-27/CRD-27 POWER
CABLE**

US Power cable

ART. CODE 13345

EU Power cable

ART. CODE 10999

SA Power cable

ART. CODE 13348



CRD-27

Spare battery charging
bay integrated

ART. CODE 13344



H-27 SILICON COVER

ART. CODE 13664

1D-LASER

2D



OPL-9725 OSE
Barcode laser scanner
Keypad: 1 key
IrDA
ART. CODE 13222



OPH-1005
Barcode Laser Scanner
Keypad: 23
Display: 320 x 240 pixels
IrDA
ART. CODE 13036



PX-36
2D CMOS imager
Keypad: 18 keys
Display: 112 x 64 pixels
graphic LCD
IrDA
Bluetooth
ART. CODE 13749



OPL-9815
Barcode laser scanner
Keypad: 18 keys
Display: 112 x 64 pixels
graphic LCD
IrDA
GPS
Bluetooth
ART. CODE 12963



OPH-3001
Barcode Laser Scanner
Keypad: 21
Display: 320 x 240 pixels
IrDA, mini USB
ART. CODE 13656

DEFAULT ENCLOSED FOR OPH-1005



WRIST STRAP

Enclosed for all batch terminals



RECHARGEABLE BATTERY

Enclosed for all batch terminals

ART. CODE 12025

SOLD SEPARATELY FOR OPH-1005



CRD-1004*

Ethernet cable enclosed [\[12607\]](#)

Power supply 6V/2A sold separately [\[10991\]](#)

ART. CODE 12589

CRD-1006*

USB cable enclosed [\[10957\]](#)

RS232 cable enclosed [\[12094\]](#)

Power supply 6V/2A sold separately [\[10991\]](#)

ART. CODE 13167

* Spare battery charging bay integrated

CHARGING AND COMMUNICATION

SOLD SEPARATELY PX-36

CRD-9723RU

USB cable, sold separately [\[10957\]](#)

RS232 cable enclosed [\[10299\]](#)

Power supply 6 (5.7)V, sold separately [\[10850\]](#)

ART. CODE 10935

PX-36



USB CABLE

Enclosed

DEFAULT ENCLOSED FOR OPH-3001



WRIST STRAP



USB CABLE

BATTERY

PX-36



RECHARGEABLE BATTERY

Sold separately

ART. CODE 13224

OPL-9700 SERIES

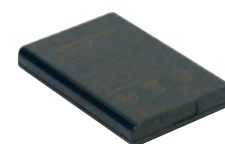


RECHARGEABLE BATTERY

Default enclosed

ART. CODE 10303

OPL-9815



RECHARGEABLE BATTERY

Default enclosed

sn >6000

ART. CODE 12025

1D-CCD



OPN-4000i
Barcode CCD scanner
Keypad: 2 keys
USB
Bluetooth
MFi certified
ART. CODE 13442



OPN-4000n
Barcode CCD scanner
Keypad: 2 keys
USB
Bluetooth
ART. CODE 13443

1D-LASER



OPN-2001
Barcode laser scanner
Keypad: 2 keys
USB
ART. CODE 11858



RS-2006
Barcode laser Ring scanner
Adjustable strap
Keypad: 2 keys + 1 trigger
USB
Bluetooth
ART. CODE 13919



SHS-35
Barcode laser scanner
Keypad: 3 keys
Display: 112 x 64 pixels graphic LCD
IrDA
USB
ART. CODE 11395



OPN-2006
Barcode laser scanner
Keypad: 2 keys
USB
Bluetooth
ART. CODE 13336

2D



PX-20
2D CMOS imager
Keypad: 2 keys
USB
Bluetooth
ART. CODE 13131



OPN-3002i
2D CMOS imager
Keypad: 2 keys
USB
Bluetooth
MFi certified
ART. CODE 13169



OPN-3002n
2D CMOS imager
Keypad: 2 keys
USB
Bluetooth
ART. CODE 13168

USB CABLES

OPN SERIES, PX-20



USB CABLE

Enclosed

SHS-35 SERIES



USB CABLE

Enclosed

STRAP



WRIST STRAP

Default enclosed [\[10225\]](#)

(All Companion Scanners, except for OPN series)

OPN SERIES, PX-20



NECK STRAP

Default enclosed

COVER

OPN-2001/4/6



SILICON COVER

Black

ART. CODE 13402

OPN-3002



SILICON COVER

Black

ART. CODE 13401

PX-20



SILICON COVER

Black

ART. CODE 14069

BATTERY

SHS-35



DRY CELL AAA

Default enclosed items

Also sold separately

ART. CODE 10344



OPC-3301i

Barcode CCD scanner

56 x 113 x 132 mm (w x d x h)

2.20 x 4.45 x 5.20 in (w x d x h)

Weight: Ca. 127 g / 4.3 oz

Bluetooth

MFi certified

ART. CODE 13724



OPI-3301i

2D CMOS imager

56 x 113 x 135 mm (w x d x h)

2.20 x 4.45 x 5.32 in (w x d x h)

Weight: Ca. 132 g / 4.5 oz

Bluetooth

MFi certified

ART. CODE 13725

SOLD SEPARATELY



CHG-3201

OPC-3301i, OPI-3301i

Power supply 6V/2A sold separately [10991]

ART. CODE 13726



CRD-3301B

OPC-3301i, OPI-3301i

RS-232, Bluetooth, USB

ART. CODE 13982



OPA-3201 DONGLE

OPC-3301i, OPI-3301i

USB

ART. CODE 13840

DEFAULT ENCLOSED



RECHARGEABLE

BATTERY

Default enclosed item

Also sold separately

ART. CODE 13830

1D-CCD



C-40
Barcode CCD scanner
Weight: Ca. 73 g / 2.57 oz
(excl. cable)
Drop proof: 1.5 m / 5 ft
Ergonomics: Hand scanner



L-50C
Barcode CCD scanner
Weight: Ca. 145 g / 5.1 oz
Drop proof: 1.5 m / 5 ft
Ergonomics: Pistol



C-41S
Barcode CCD scanner
Weight: Ca. 55 g / 1.9 oz
(excl. cable)
Drop proof: 1.5 m / 5 ft
Ergonomics: Hand scanner



C-37
Barcode CCD scanner
Weight: Ca. 90 g / 3.2 oz
(excl. cable)
Drop proof: 1.5 m / 5 ft
Ergonomics: Hand scanner

1D-LASER



OPL-6845S
Barcode laser scanner
Weight: Ca. 90 g / 3.2 oz
Drop proof: 1.5 m / 5 ft
Ergonomics: Hand scanner with stand



L-50R
Barcode laser scanner
Weight: Ca. 145 g / 5.1 oz
Drop proof: 1.5 m / 5 ft
Ergonomics: Pistol



OPR-3201
Barcode laser scanner
Weight: Ca. 80 g / 2.8 oz
Drop proof: 1.5 m / 5 ft
Ergonomics: Pistol scanner with stand



OPR-3001
Barcode laser scanner
Weight: Ca. 230 g / 8.1 oz
(excl. cable)
Drop proof: 2 m / 6.5 ft
Ergonomics: Pistol



L-46R
Barcode laser scanner
Weight: Ca. 111g / 3.9 oz
(ex cable)
Drop proof: 1.8 m / 6 ft
Ergonomics: Hand scanner with stand.

2D



M-10
2D CMOS imager
Omni-directional
Scan rate: Up to 60 fps
72 x 70 x 139 mm (wxdxh)
Presentation scanner



L-51X
2D CMOS imager
Weight: Ca. 150 g / 5.3 oz
Drop proof: 1.5 m / 5 ft
Ergonomics: Pistol



OPI-3601
2D CMOS imager
Weight: Ca. 80 g / 2.8 oz
(excl. cable)
Drop proof: 1.5 m / 5 ft
Ergonomics: Pistol



L-22X
2D CMOS imager
Weight: Ca. 150 g / 5.3 oz
Drop proof: 1.5 m / 5 ft
Ergonomics: Hand scanner



L-46X
2D CMOS imager
Weight: Ca. 112g / 3.9 oz
(ex cable)
Drop proof: 1.8 m / 6 ft
Ergonomics: Hand scanner with stand.

STAND



OPR-2001 STAND

Default enclosed item

Also sold separately

ART. CODE 11647



OPR-3001 STAND BLACK

Sold separately

ART. CODE 11832

1D-LASER



OPR-2001

Barcode laser scanner

Weight: Ca. 60 g / 2.1 oz

Drop proof: 1.5 m / 5 ft

Ergonomics: Hand scanner with stand

ART. CODES SCANNERS

C-37 (WHITE/BLACK)	
C-37-WHITE-USB	12309
C-37-BLACK-RS232	12305
C-37-BLACK-USB	12306
C-40	
C-40-USB-HID-AM-V-WHT	13672
C-41	
C-41-USB-HID-AM-V-WHT	13673
C-41S	
C-41S-USB-HID-BLK	13894
L-22X	
L-22X-USB-BLK-STD	14009
RS232 CABLE-BLACK-2M	14160
USB CABLE-BLACK-2M	14268
USB CABLE-WHITE-2M	14269
L-46	
L-46X-USB-BLK-STD	14007
L-46R-USB-BLK-STD	14008
L-46X-USB-WHT-STD	14059
L-46R-USB-WHT-STD	14060
USB CABLE-2M	14140
RS232 CABLE-BLACK-2M	14142
RS232 CABLE-WHITE-2M	14143
L-50	
L-50C-USB-BLK+STD	13750
L-50C-RS232-BLK+PS+STD	13927
L-50R-USB-BLK+STD	13955
RS232 CABLE FOR L-50	14001
USB CABLE FOR L-50	13774
L-51	
L-51X-USB-WHT	13956
L-51X-USB-BLK	13957
M-10	
M-10-USB BLACK	13356
M-10-USB WHT	13440
STD-M10S-WHT	14133
RS232 CABLE-BLACK-2M	13695
RS232 CABLE-WHITE-2M	13696
OPI-3601	

OPI-3601-BLACK-RS232+STAND+PS	13083
OPI-3601-BLACK-USBHID+STAND	13084
OPL-6845S	
Default with stand	
OPL-6845S-BLACK+STD-USB	14164
OPL-6845Z-WHITE+STD-USB	12092
RS232 CABLE-BLACK-2M	14160
USB CABLE-BLACK-2M	14268
USB CABLE-WHITE-2M	14269
OPR-2001	
OPR-2001+STD-RS232	11646
OPR-2001+STD-USB	11645
OPR-3001 (WHITE/BLACK)	
Default straight cable	
OPR-3001-WHITE-USB	11611
OPR-3001-BLACK-RS232	11756
OPR-3001-BLACK-USB	11757
OPR-3001-BLACK-WEDGE	11758
Also coiled cable	
OPR-3001-BLACK-RS232-COILED	11759
OPR-3001-BLACK-USB-COILED	11760
OPR-3201 (WHITE/BLACK)	
Default with stand	
OPR-3201-WHITE+STD-USB	11795
OPR-3201-BLACK+STD-RS232	11843
OPR-3201-BLACK+STD-USB	11789

POWER SUPPLY



POWER SUPPLY 6V/2A

OPR-2001-RS232
OPR-3001-RS232
OPR-3201-RS232
C-37-RS232
Sold separately
ART. CODE 10991

1D-CCD



F-70
Barcode CCD scanner
Scan rate: 700 scans/sec
Case material: Sheet metal
I-type:
55 x 47 x 20 mm (wxdxh)
2.17 x 1.85 x 0.79 in (wxdxh)
L-type:
52 x 55 x 20 mm (wxdxh)
2.05 x 2.17 x 0.79 in (wxdxh)
RS232
USB (HID/VCP)



NLV-4001
Barcode CCD scanner
Scan rate: 300 scans/sec
Case material: ABS
33 x 41.1 x 24 mm (wxdxh)
1.30 x 1.62 x 0.94 in (wxdxh)
IP rate: 65
RS232
USB (HID/VCP)

1D-LASER



NLV-1001
Barcode laser scanner
Scan rate: 100 scans/sec
Case material: ABS
30 x 43.3 x 20 mm (wxdxh)
1.18 x 1.70 x 0.79 in (wxdxh)
IP rate: 43
RS232
USB (HID/VCP)
Keyboard Wedge

2D



NLV-3101
2D CMOS area sensor
Scan rate: Up to 60 fps
Case material: ABS
41.1 x 24 x 33 mm (wxdxh)
1.62 x 0.94 x 1.30 in (wxdxh)
IP rate: 65
RS232
USB (HID/VCP)

POWER SUPPLY



POWER SUPPLY 5V/2A

F-70-I-RS232

F-70-L-RS232

NLV-1001-RS232

Sold separately

ART. CODE 11052

NLV-3101-RS232

Sold separately

ART. CODE 10991

ART. CODES SCANNERS

NLV-1001

NLV-1001-RS232 **11613**

NLV-1001-USB-HID **11614**

NLV-3101

NLV-3101-RS232 **13091**

NLV-3101-USB **13092**

NLV-4001

NLV-4001-RS232 NO CONNECTOR **13934**

NLV-4001-USB **13935**

F-70

F-70-I-RS232 **13184**

F-70-L-RS232 **13185**

1D-CCD



MDC-100

Barcode CCD scanner
 Scan rate: 300 scans/sec
 22.8 x 15.0 x 11.5 mm
 (wxdxh)
 0.9 x 0.59 x 0.45 oz
 (wxdxh)
 Weight CMOS: Ca. 3.5 g /
 0.12 oz



MDC-200

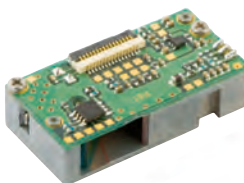
Barcode CCD scanner
 Scan rate: 300 scans/sec
 22.8 x 15 x 7.5 mm
 (wxdxh)
 0.90 x 0.59 x 0.30 in
 (wxdxh)
 Weight CMOS: Ca. 3.5 g /
 0.12 oz

1D-LASER



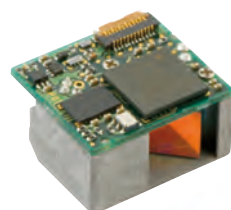
MDL-1000

Barcode laser scanner
 Scan rate: 100 scans/sec
 Ca. 1.97 - 25.59 in
 28 x 18 x 7.8 mm (wxdxh)
 1.10 x 0.71 x 0.31 in (wxdxh)
 Weight: Ca. 10 g / 0.35 oz



MSL-1000

Barcode laser scanner
 Scan rate: 100 scans/sec
 Ca. 1.97 - 25.59 in
 28 x 14 x 7.8 mm (wxdxh)
 1.10 x 0.55 x 0.31 in (wxdxh)
 Weight: Ca. 10 g / 0.35 oz



MDL-2001

Barcode laser scanner
 Scan rate: 100 scans/sec
 Ca. 1.97 - 25.59 in
 20.4 x 18 x 11.2 mm
 (wxdxh)
 0.79 x 0.71 x 0.44 in (wxdxh)
 Weight: Ca. 4.7 g / 0.17 oz

2D



MDI-4x00

2D CMOS with auto-focus
 Scan rate: up to 100 fps
 Weight CMOS: Ca. 5.5 g /
 0.19 oz
 25.3 x 10.0 x 21.0 mm
 (wxhxd)
 1.0 x 0.39 x 0.83 in
 (wxhxd)



MDI-3100

2D CMOS imager
 Scan rate: up to 60 fps
 Ca. 2.17 - 11.8 in
 25.3 x 21 x 12.4 mm
 (wxdxh)
 1 x 0.83 x 0.49 in (wxdxh)
 Weight: Ca. 8 g / 0.28 oz

SCAN ENGINES

ART. CODES ENGINES 1D/2D

MDL-1000	
ART. CODE CONN. TIN	11501
MSL-1000	
ART. CODE CONN. TIN	11400
MDL-2001	
ART. CODE CONN. GOLD	12426
ART. CODE FFC FLATCABLE	11438
MDI-3100	
ART. CODE	12972
ART. CODE HD	12975
ART. CODE FFC FLATCABLE	11438
MDC-100	
ART. CODE	13349
MDC-200	
ART. CODE	13627
MDI-4000	
ART. CODE	13948
ART. CODE HD	13949
ART. CODE UHD	13959
MDI-4100	
ART. CODE	13950
ART. CODE HD	13951
ART. CODE UHD	13960
MDL-1500	
ART. CODE	13978

SOLD SEPARATELY



MEK-3100
VARIOUS ENGINES
Testkit
ART. CODE 14057

CONTACT DETAILS HEADQUARTERS

OPTICON SENSORS EUROPE B.V.

Opaallaan 35 / 2132 XV Hoofddorp / The Netherlands

Tel: +31 (0)23-5692700

E-mail: sales@opticon.com

OPTOELECTRONICS Co., Ltd (JAPAN)

12-17, Tsukagoshi 4-chome / Warabi-city Saitama Pref., 335-0002 / Japan

Tel: +81 (0)48-4461183

E-mail: sales@opto.co.jp

OPTICON INC. (NORTH AMERICA)

2220 Lind Avenue SW, Suite 100 / Renton, WA 98057 / United States of America

Tel: +1 425 651-2120

E-mail: sales@opticonusa.com

CONTACT DETAILS REGIONAL OFFICES

Please check our website www.opticon.com for contact details of our regional offices.

