

# SUNMI V2s PLUS Smart Mobile Terminal

Pushing the boundaries to help you achieve more.

Standard Version / Scanner & NFC Version / GMS Version

## Three Printing Types Supported For Increased Flexibility

Support receipt, label and black mark printing\* and 80mm printing sizes. Besides, the print speed is upgraded to 80mm/s MAX.

## 7.7V/3500mAh Large Capacity Removable Battery Duty Round The Clock, Effortlessly

A fully charged V2s PLUS can last for 14 days in standby mode, or work continuously for over 16 hours. Removable battery design brings longer run time and lasting productivity.

## One Scan Engine To Support All Types Of Barcodes\*

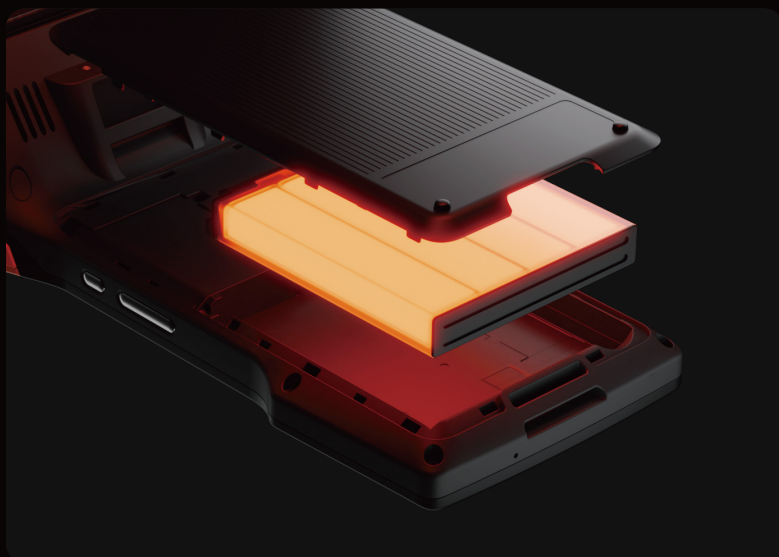
Read any 1D or 2D barcodes, even if scratched, folded or stained.

## New Configuration For A Performance Boost

The leap in performance gives you the ability to smoothly switch between multi-apps and power up your business. The new SUNMI OS further enhanced device's security and integration.



\* Black mark printing is available in the Scanner Version/GMS Version.  
Scanning engine is available with the Scanner Version.





## SUNMI V2s PLUS Tech Specs

### General Configuration

<b>Product Model</b> T5F01	<b>OS</b> SUNMI OS (*based on Android 11)	<b>Processor</b> Cortex-A53, octa-core (4* 2.0GHz + 4* 1.5GHz)	<b>Display</b> 6.22"HD, 1520*720 IPS Capacitive multi-touch	<b>Network</b> 2G & 3G & 4G
<b>Printer</b> Built-in 80 thermal printer; Print speed: 80mm/s; Paper roll: φ 50mm; Receipt printing: 80mm, label printing (wide 60mm~80mm; High>20mm; Gap>2mm)	<b>Wi-Fi</b> 2.4G/5G IEEE 802.11 a/b/g/n/ac	<b>Bluetooth</b> Bluetooth 2.1/3.0/4.2, BLE	<b>SIM Card Slot</b> 2*Nano SIM	
<b>MicroSD Card Slot</b> 1*MicroSD	<b>Speaker</b> 1* 1.2W	<b>GPS</b> GPS/Glonass/Beidou/ Galileo	<b>Port</b> 1* Type-C OTG supported	<b>Battery</b> Removable, Lithium Polymer battery 7.7V/3500mAh (equal to 3.85V/7000mAh)
<b>Power Adapter</b> Input: AC 100~240V Output: DC 5V/2A	<b>Protection</b> 1.0m drop spec *Data from Sunmi Lab	<b>Dimensions</b> 237.2*100.91*63mm	<b>Environment</b> Operating temp: -10°C~50°C Storage temp: -20°C ~ 60°C	<b>Total Weight</b> 535g

	V2s PLUS Standard	V2s PLUS Scanner & NFC	V2s PLUS GMS
<b>Memory</b>	2GB RAM+16GB ROM	3GB RAM+32GB ROM	3GB RAM+32GB ROM
<b>Scanner</b>	N/A	Professional 2D barcode scan engine	N/A
<b>NFC Reader</b>	N/A	Type A & B card, Mifare card, Felica card; ISO/IEC 14443 and ISO 15693 compliant	Type A & B card, Mifare card, Felica card; ISO/IEC 14443 and ISO 15693 compliant
<b>PSAM Card Slot</b>	N/A	4* PSAM	4* PSAM
<b>Camera</b>	Rear:5MP Auto Focus with Flash LED, Support 1D/2D	Front: 2MP FF Rear: 13MP, Flash, AF 1D/2D barcode reading	Front: 2MP FF Rear: 13MP, Flash, AF 1D/2D barcode reading
<b>Buttons</b>	1* Power on/off button (lock screen button) 2* Volume (+/-) button	1* Power on/off button (lock screen button) 2* Volume (+/-) button 2* Scan button	1* Power on/off button (lock screen button) 2* Volume (+/-) button

\*Data regarding dimension and weight tested internally at SUNMI labs, actual results may be slightly different according to different measurement methods.